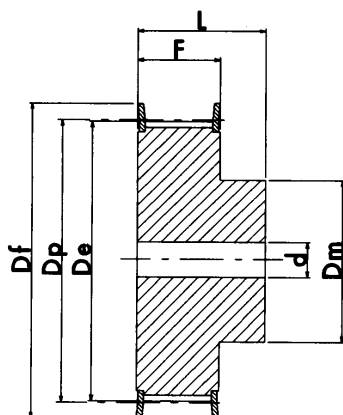
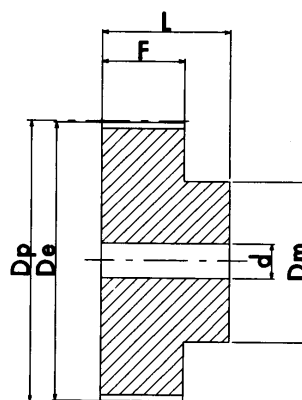


# "CT" PULLEYS FOR "AT" METRIC PITCH POLYURETHANE BELTS



EXECUTION 1F



EXECUTION 2

How to identify a pulley - Example:  
**21 CT5 25**

Pulley length (mm) **21**  
 Pulley pitch (mm) **CT5**  
 No. of teeth on pulley **25**

material: **ALUMINIUM**

## CT5 (5 mm pitch) DESIGNED FOR 10 mm WIDE BELT

ALUMINIUM

DESCRIPTION	EXEC.	No. of TEETH	De	Df	Dm	F	L	d	FLANGE No.
21 CT512	1F	12	17.85	23.0	11	15	21	-	1
21 CT514	1F	14	21.05	25.0	13	15	21	-	2
21 CT515	1F	15	22.65	28.0	16	15	21	6	4
21 CT516	1F	16	24.20	32.0	18	15	21	6	5
21 CT518	1F	18	27.40	32.0	20	15	21	6	6
21 CT519	1F	19	29.00	36.0	22	15	21	6	8
21 CT520	1F	20	30.60	36.0	23	15	21	6	8
21 CT522	1F	22	33.85	38.0	24	15	21	6	9
21 CT524	1F	24	37.00	42.0	26	15	21	6	13
21 CT525	1F	25	38.60	44.0	26	15	21	6	12
21 CT526	1F	26	40.20	44.0	26	15	21	6	12
21 CT527	1F	27	41.80	48.0	30	15	21	8	11
21 CT528	1F	28	43.35	48.0	32	15	21	8	11
21 CT530	1F	30	46.55	51.0	34	15	21	8	16
21 CT532	1F	32	49.70	54.0	38	15	21	8	18
21 CT536	1F	36	56.05	64.0	38	15	21	8	23
21 CT540	1F	40	62.45	66.5	40	15	21	8	24
21 CT542	1F	42	65.60	70.0	40	15	21	8	26
21 CT544	2	44	68.80	-	45	15	21	8	-
21 CT548	2	48	75.15	-	50	15	21	8	-
21 CT560	2	60	94.25	-	65	15	21	8	-

# "CT" PULLEYS FOR "AT" METRIC PITCH POLYURETHANE BELTS

## CT5 (5 mm pitch) DESIGNED FOR 16 mm WIDE BELT

ALUMINIUM	DESCRIPTION	EXEC.	No. of TEETH	De	Df	Dm	F	L	d	FLANGE No.
	27 CT5 12	1F	12	17.85	23.0	11	21	27	-	1
	27 CT5 14	1F	14	21.05	25.0	13	21	27	-	2
	27 CT5 15	1F	15	22.65	28.0	16	21	27	6	4
	27 CT5 16	1F	16	24.20	32.0	18	21	27	6	5
	27 CT5 18	1F	18	27.40	32.0	20	21	27	6	6
	27 CT5 19	1F	19	29.00	36.0	22	21	27	6	8
	27 CT5 20	1F	20	30.60	36.0	23	21	27	6	8
	27 CT5 22	1F	22	33.85	38.0	24	21	27	6	9
	27 CT5 24	1F	24	37.00	42.0	26	21	27	6	13
27 CT5 25	1F	25	38.60	44.0	26	21	27	6	12	
27 CT5 26	1F	26	40.20	44.0	26	21	27	6	12	
27 CT5 27	1F	27	41.80	48.0	30	21	27	8	11	
27 CT5 28	1F	28	43.35	48.0	32	21	27	8	11	
27 CT5 30	1F	30	46.55	51.0	34	21	27	8	16	
27 CT5 32	1F	32	49.70	54.0	38	21	27	8	18	
27 CT5 36	1F	36	56.05	64.0	38	21	27	8	23	
27 CT5 40	1F	40	62.45	66.5	40	21	27	8	24	
27 CT5 42	1F	42	65.60	70	40	21	27	8	26	
27 CT5 44	2	44	68.80	-	45	21	27	8	-	
27 CT5 48	2	48	75.15	-	50	21	27	8	-	
27 CT5 60	2	60	94.25	-	65	21	27	8	-	

## CT5 (5 mm pitch) DESIGNED FOR 25 mm WIDE BELT

ALUMINIUM	DESCRIPTION	EXEC.	No. of TEETH	De	Df	Dm	F	L	d	FLANGE No.
	36 CT5 12	1F	12	17.85	23.0	11	30	36	-	1
	36 CT5 14	1F	14	21.05	25.0	13	30	36	-	2
	36 CT5 15	1F	15	22.65	28.0	16	30	36	6	4
	36 CT5 16	1F	16	24.20	32.0	18	30	36	6	5
	36 CT5 18	1F	18	27.40	32.0	20	30	36	6	6
	36 CT5 19	1F	19	29.00	36.0	22	30	36	6	8
	36 CT5 20	1F	20	30.60	36.0	23	30	36	6	8
	36 CT5 22	1F	22	33.85	38.0	24	30	36	6	9
	36 CT5 24	1F	24	37.00	42.0	26	30	36	6	13
36 CT5 25	1F	25	38.60	44.0	26	30	36	6	12	
36 CT5 26	1F	26	40.20	44.0	26	30	36	6	12	
36 CT5 27	1F	27	41.80	48.0	30	30	36	8	11	
36 CT5 28	1F	28	43.35	48.0	32	30	36	8	11	
36 CT5 30	1F	30	46.55	51.0	34	30	36	8	16	
36 CT5 32	1F	32	49.70	54.0	38	30	36	8	18	
36 CT5 36	1F	36	56.05	64.0	38	30	36	8	23	
36 CT5 40	1F	40	62.45	66.5	40	30	36	8	24	
36 CT5 42	1F	42	65.60	70.0	40	30	36	8	26	
36 CT5 44	2	44	68.80	-	45	30	36	8	-	
36 CT5 48	2	48	75.15	-	50	30	36	8	-	
36 CT5 60	2	60	94.25	-	65	30	36	8	-	

CT20 pitch pulleys and bars are manufactured on request.